

# MERCANA

Clarissa 18.0L x 16.0W x 26.25H Black Woven Leather Seat W/ Gold Frame Counter Stool  
**SKU: 69392**



## WOVEN LEATHER AND IRON CONSTRUCTION

The Clarissa is a high counter stool made from sturdy iron framing and a woven leather seat.



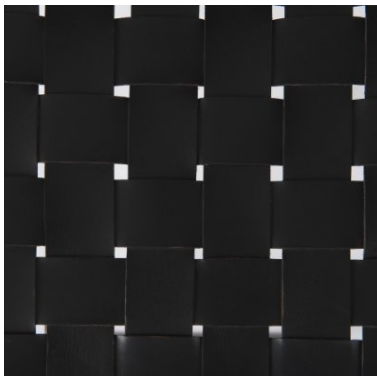
## DARK METALLIC IRON

The Clarissa is finished with solid gold-finished metallic iron legs and a true black leather seat that shows off a unique woven formation.



## FUNCTIONALITY FOR ANY SPACE

The Clarissa is a versatile counter stool that can be placed anywhere where additional seating is needed. Its simple design allows you to add functional seating space that is both stylish and unique.



## INDUSTRIAL INSPIRED

Designed to complement industrial styled spaces, the Clarissa counter stool blends seamlessly into spaces where clean lines and dark accent pieces are present.

Clarissa is a 26" High Black Woven Counter Stool



## AVAILABLE IN

1 Color

1 Size

5 Related Products



Explore Online

# MERCANA

## Clarissa 18.0L x 16.0W x 26.25H Black Woven Leather Seat W/ Gold Frame Counter Stool SKU: 69392

### FEATURES & SPECIFICATIONS

Adjustable Shelves?	Does Not Apply
Hand Made (Y/N)	Yes
Hand Painted (Y/N)	No
Scratch Resistant (Y/N)	No
Water Resistant (Y/N)	No
Fire Resistant (Y/N)	No
Finished back (Y/N)	Yes
is Unfinished?	No
Seat Style	Square
Leg/Base Type	4 Legs
Shagreen-embossed Exterior	No
Arms Included?	No
Upholstered?	No
Tufted Cushions?	No
Nailhead Trim?	No
Swivel?	No
Foldable	No
Stackable?	No
Height Adjustable Seat?	No
Pneumatic/Hydraulic Lift?	No
Footrest Included?	Yes
Seating Capacity	1
Seat Cushion Reversible Cushion (Y/N)	No
Performance Fabric (Y/N)	No
Back Included?	No
Plug-In	No
Made to Order	No

### DIMENSIONS & WEIGHT

Length	18.0 inches
Width	16.0 inches
Height	26.0 inches
CBM	0.1227
Weight	11.02 lbs (5.00 kg)
Box Size	18.0L x 20.0W x 28.0H
Box Weight	15.43 lbs (7.00 kg)
Weight Capacity	250 lbs (113.38 kg)
Leg Size	0.62L x 0.62W x 25.25H
Leg Clearance (WxH)	14.75W x 16H
Seat Height - Floor to Seat	25.25 inch (64.14 cm)
Seat Width - Side to Side	18 inch (45.72 cm)
Back Height	0.75 inch (1.9 cm)
Seat Depth - Front to Back	16 inch (40.64 cm)
Arm Depth - Front to Back	Does Not Apply
Arm Width - Side to Side	Does Not Apply
Footrest - Seat to Footrest Distance	8.25 inch (20.96 cm)
Metal Surface Type 01	Round Tube
Tube/Bar Dimensions 01 (WxH or Ø)	0W x 0H or 15
Metal Gauge 01	16

### MATERIALS & FINISHES

Material Code - Body	M0220-GLD -M
Body Material Type	Metal
Body Metal Type	Iron
Body Finish Texture	Antiqued
Body Natural Variation	No Natural Variation
Material Code - Legs/Base	M0220-GLD -M
Leg/Base Material Type	Metal
Leg/Base Metal Type	Iron
Leg/Base Texture Description	Antiqued
Leg/Base Color	Gold
Leg /Base Natural Variation	No Natural Variation
Material Code - Seat	M0220-GLD -M
Fabric/Leather Material Code - Seat	IC-L-06
Seat Material	Leather
Seat Metal Type	Iron
Seat Fabric/Leather Type	Genuine Leather
Seat Fabric/Leather Composition	100% Leather
Seat Fabric/Leather Rub Count	Dry (After 50 cycles), Wet (After 20 cycles)
Seat Fabric/Leather Color Fastness	3
Seat Genuine Leather Type	Top Grain Leather
Seat Genuine Leather Animal Type	Buffalo
Seat Finish Texture	Antiqued
Seat Color	Black
Seat Natural Variation	No Natural Variation
Main Color	Black

### ASSEMBLY REQUIREMENT

Assembly Required?	No
Removeable Legs (Y/N)	No
Additional tools needed (Y/N)	No
Avoid Power Tools?	Yes
Level of Assembly	None