

MERCANA

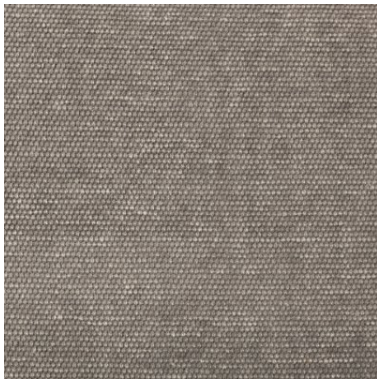
Alhambra 55L x 14W Upholstered Gray Seat W/Black Wood Legs Accent Bench
SKU: 67494



UPHOLSTERED TOP

The Alhambra features a stunning, grey-toned fabric wrapped top that is perfectly cushioned for a comfortable seating experience.

The Alhambra is a stunning, handcrafted bench featuring a fabric covered top supported by four, turned wooden legs.



SOLID WOOD BASE

Crafted with sturdy wood and finished in a dark brown tone, the Solis is not only stylish but is exceptionally sturdy and built to stand the test of time.



GLOBAL/ELEGANT INSPIRED DESIGN

The Alhambra flaunts a unique design with clean lines and a sleek silhouette that makes it a perfect fit for spaces based on the global or elegant design style.



AVAILABLE IN

1 Color

1 Size



Explore Online

MERCANA

Alhambra 55L x 14W Upholstered Gray Seat W/Black Wood Legs Accent Bench SKU: 67494

FEATURES & SPECIFICATIONS

Hand Made (Y/N)	Yes
Hand Painted (Y/N)	No
Scratch Resistant (Y/N)	No
Stain Resistant (Y/N)	Yes
Water Resistant (Y/N)	Yes
Fire Resistant (Y/N)	No
Finished Back (Y/N)	Yes
Kiln-Dried Wood	Yes
Product Type	Entryway Bench
is Unfinished?	No
Back Included?	No
Arms Included?	No
Arm Type	No Arms
Number of Arms	Zero
Leg/Base Design	Bun Feet
Leg Included	Yes
Nailhead Trim	No
Legs Included	Yes
Slip covered	No
Cushion Ticking	No
Removable Cushions?	No
Tufted Cushions	No
Seat Cushion Removeable Cushions (Y/N)	No
Back Cushion Removeable Cushion (Y/N)	No
Reversible Cushions	No
Seat Cushion Reversible Cushion (Y/N)	No
Back Cushion Reversible Cushions (Y/N)	No
Upholstered?	No
Tufted Upholstery?	No
Storage Included?	No
Baskets Included?	No
Weight Capacity per Seat at Least 250 lbs	No
Wheels/Casters (Y/N)	No
Wheels/Casters - Lock (Y/N)	No
Performance Fabric (Y/N)	Yes

DIMENSIONS & WEIGHT

Length	55.0 inches
Width	14.0 inches
Height	18.0 inches
CBM	0.2271
Weight	27.56 lbs (12.50 kg)
Box Size	67.3L x 16.5W x 8.3H
Box Weight	30.20 lbs (13.70 kg)
Seating Capacity	6
Weight Capacity	300 lbs (136.05 kg)
Leg Clearance	50W x 10.5H
Leg Size	1.75L x 1.75W x 14H
Seat Height - Floor to Seat	18.00 inch (45.72 cm)
Seat Width - Side to Side	14.00 inch (35.56 cm)
Seat Depth - Front to Back	55.00 inch (139.7 cm)
Leg/Base Height - Top to Bottom	14 inch (35.56 cm)

MATERIALS & FINISHES

Natural Variation Type	Natural Wood Grain Color Variation
Material Code Body	M0003-AW1
Body Material	Solid Wood
Body Wood Species	Mango
Body Finish Application Description	Spray with Lacquer Coated
Body Finish Texture	Matte
Body Color	Black
Body Additional Coating 1	White Wash
Body Natural Variation	Natural Wood Grain Color Variation
Body Wood Frame Type	Mango wood
Material Code Legs/Base	M0003-AW1
Leg/Base Material Type	Solid Wood
Leg/Base Wood Species	Mango
Leg/Base Finish Application Description	Spray with Lacquer Coated
Leg/Base Finish Texture	Matte
Leg/Base Color	Black
Leg/Base Natural Variation	Natural Wood Grain Color Variation
Material Code - Seat	M0003-AW1
Fabric/Leather Material Code - Seat	AAF-012
Seat Material	Fabric
Seat Wood Species	Mango

ASSEMBLY REQUIREMENT

# of Parts/Components	5
Assembly Required?	Yes
Removeable Legs (Y/N)	Yes
Suggested Number of People	2
Estimated Time to Assemble	10
Additional tools needed (Y/N)	No
Avoid Power Tools?	Yes
Level of Assembly	Full Assembly Needed
Assembly Instructions	67494_INSTRUCTIONS.pdf