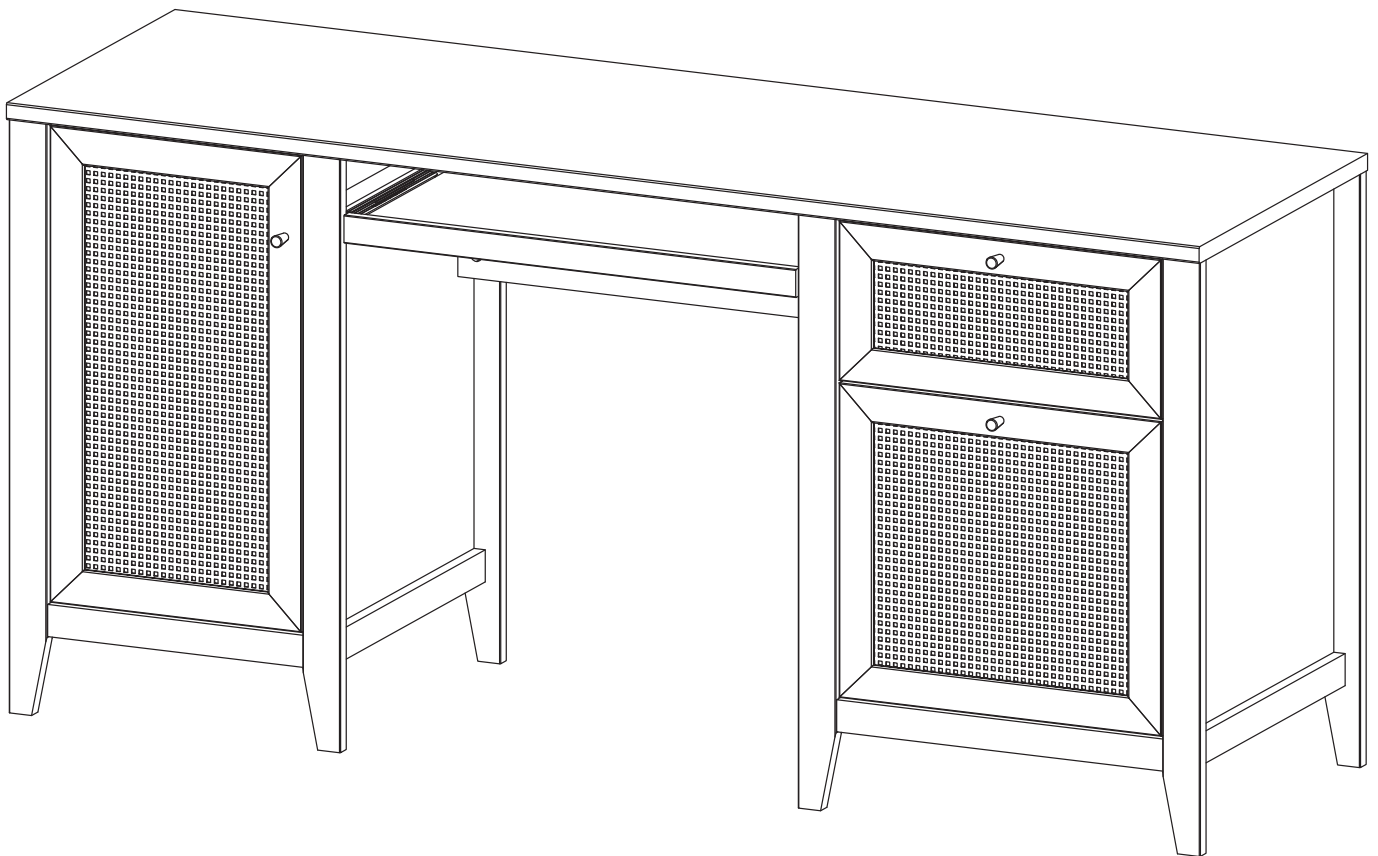


# ASSEMBLY INSTRUCTIONS

# EEI-6117

VO.07.11.22



**Questions? Contact us!**

609.256.9000 • [cs@modway.com](mailto:cs@modway.com)  
[www.modway.com](http://www.modway.com)

\*modway

# Let's get started!

\*modway



Read through all of the instructions before starting



Care instructions are listed in the last step of this manual



Approx. 120 minutes assembly time



Make sure you have all parts and components before discarding any packing materials



2 people recommended for assembly

**Only use hand tools to assemble this item.** Do not use power tools. Do not tighten bolts or screws completely until all hardware is lined up and inserted into the holes.

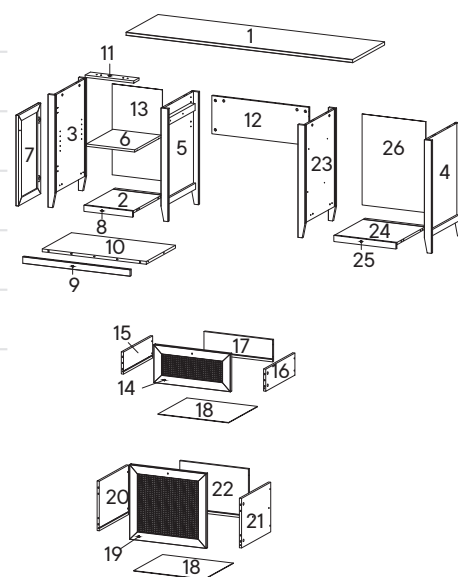
Do not over-tighten screws and bolts to avoid stripping the hardware or cracking the item.

Assemble your item on a flat, carpeted area, with plenty of space to work. This will prevent damage and scratches to your floors or the item while you're assembling the product.

Keep all components and packaging out of reach of children or animals to avoid risk of choking or suffocation.

## Furniture components:

1	Top Board	x1	11	Support Board	x1	21	Side Drawer Right Big	x1
2	Bottom Board 1	x1	12	Back Board 1	x1	22	Back Drawer Big	x1
3	Side Board Left	x1	13	Back Board 2	x1	23	Center Board Right	x1
4	Side Board Right	x1	14	Front Drawer Small	x1	24	Bottom Board 2	x1
5	Center Board Left	x1	15	Side Drawer Left Small	x1	25	Bottom Skirt 2	x1
6	Adjustable Shelf	x1	16	Side Drawer Right Small	x1	26	Back Board 3	x1
7	Frame Door	x1	17	Back Drawer Small	x1			
8	Bottom Skirt 1	x1	18	Bottom Drawer	x2			
9	Front Skirt	x1	19	Front Drawer Big	x1			
10	Keyboard Drawer Base	x1	20	Side Drawer Left Big	x1			



## Provided hardware:

A		Cam Bolt Ø6 x 35 mm	x37	J		Screw M 4.5 x 12.5 mm	x12	S		File Hang Rail	x2
B		Cam Lock Ø15 mm	x29	K		Floor Protector	x8	HS26C		Hinge	x2
C		Wood Dowel Ø8 x 30 mm	x30	L		Screw M 6 x 10.5 mm	x22	RB25A		Keyboard Drawer Runner	x1
D		Shelf Pin	x4	M		Screw M 8 x 39 mm	x8	RB34A		Drawer Runner	x1
E		Screw M 6.4 x 35 mm	x2	N		Wedge	x24	RM35A		Drawer Runner	x1
F		Cam Lock Ø12 mm	x8	O		Screw M 3.5 x 15.5 mm	x24				
G		Wood Dowel Ø6 x 30 mm	x6	P		Handle	x3				
H		Screw M 3.5 x 13 mm	x6	Q		Screw M 4 x 25 mm	x3				
I		Allen Key	x2	R		Screw Cap Ø15 mm	x10				

## What you need:

Phillips Head Screwdriver

Wait!

Missing parts or hardware? Need assistance?  
Contact us before returning your item. We're here to help!  
609.256.9000 • cs@modway.com

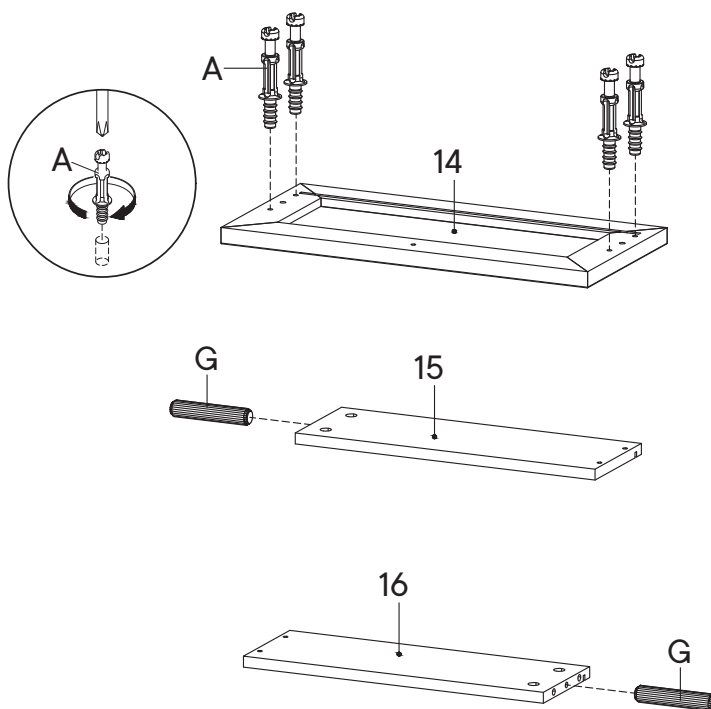
# Step 1

## HARDWARE

- A** Cam Bolt  $\varnothing 6 \times 35$  mm x4
- G** Wood Dowel  $\varnothing 6 \times 30$  mm x2

## COMPONENTS

- 14** Front Drawer Small x1
- 15** Side Drawer Left Small x1
- 16** Side Drawer Right Small x1



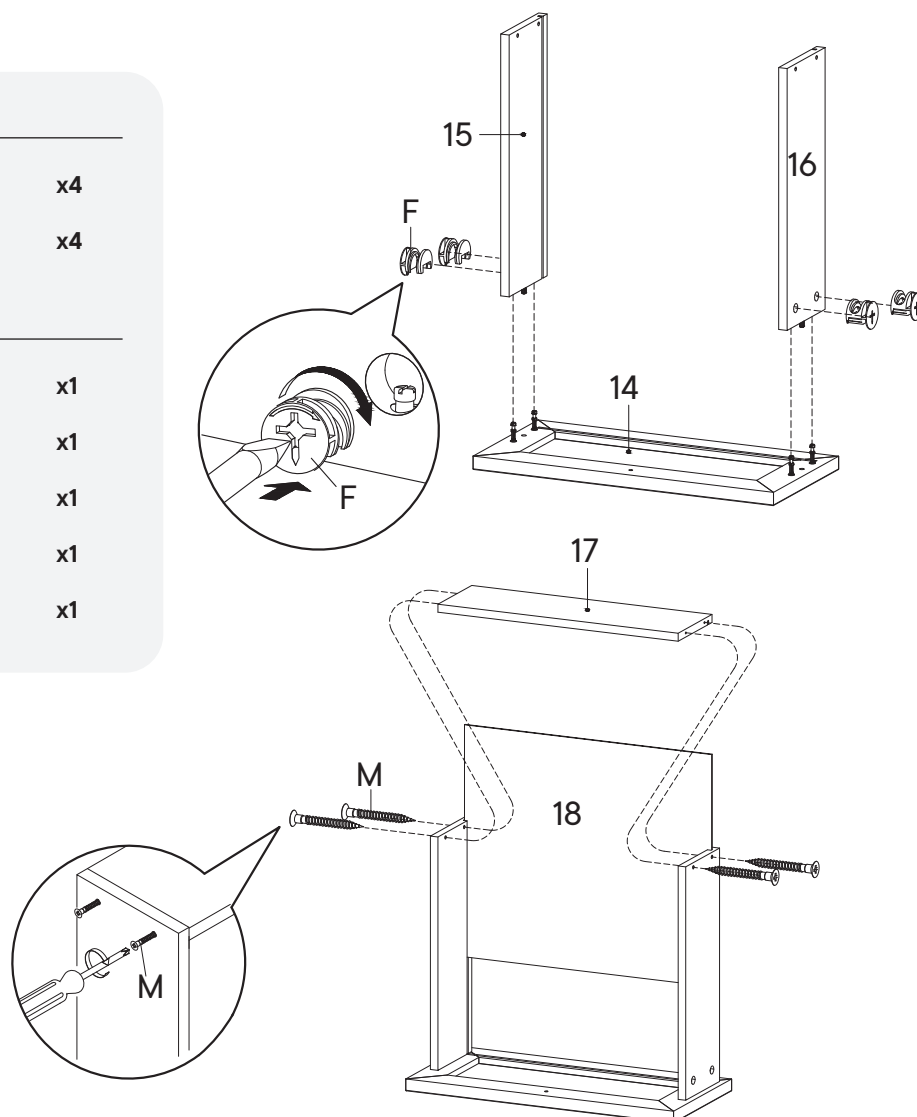
# Step 2

## HARDWARE

- F** Cam Lock  $\varnothing 12$  mm x4
- M** Screw M 8 x 39 mm x4

## COMPONENTS

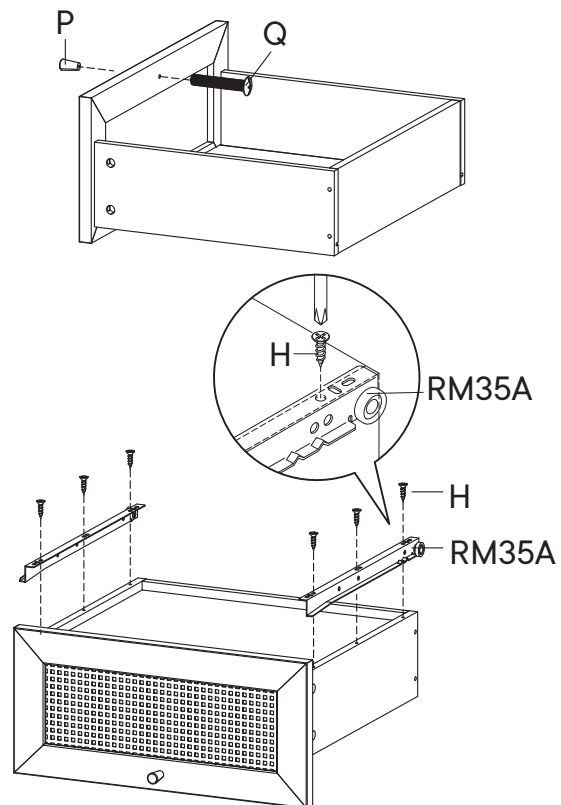
- 14** Front Drawer Small x1
- 15** Side Drawer Left Small x1
- 16** Side Drawer Right Small x1
- 17** Back Drawer Small x1
- 18** Bottom Drawer x1



## Step 3

### HARDWARE

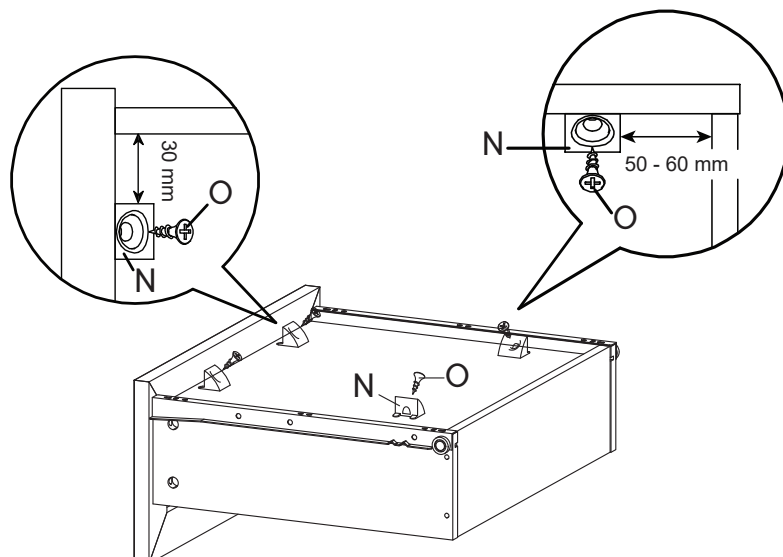
<b>H</b>	Screw M 3.5 x 13 mm	x6
<b>P</b>	Handle	x1
<b>Q</b>	Screw M 4 x 25 mm	x1
<b>RM35A</b>	Drawer Runner	x1



## Step 4

### HARDWARE

<b>N</b>	Wedge	x4
<b>O</b>	Screw M 3.5 x 15.5 mm	x4



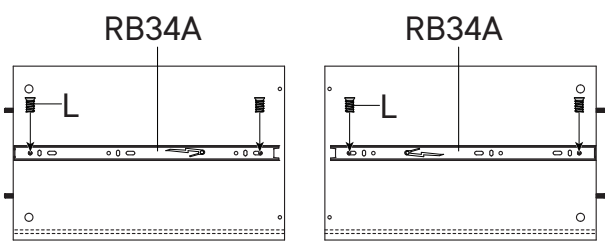
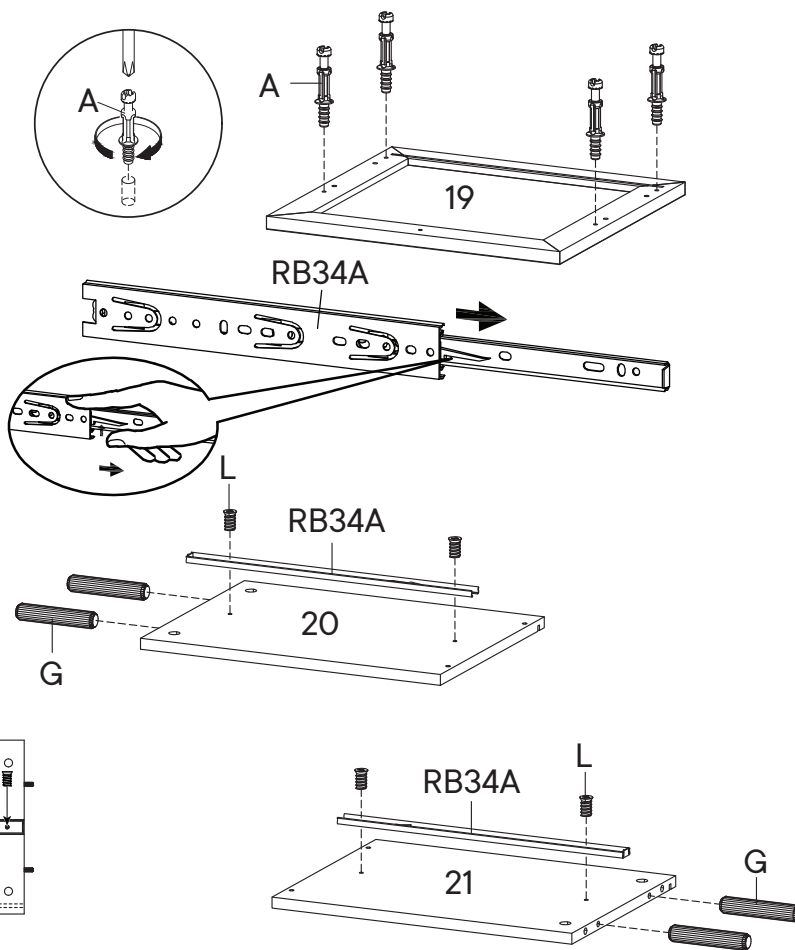
# Step 5

## HARDWARE

- A** Cam Bolt Ø6 x 35 mm x4
- G** Wood Dowel Ø6 x 30 mm x4
- L** Screw M 6 x 10.5 mm x4
- RB34A** Keyboard Drawer Runner x1

## COMPONENTS

- 19** Front Drawer Big x1
- 20** Side Drawer Left Big x1
- 21** Side Drawer Right Big x1



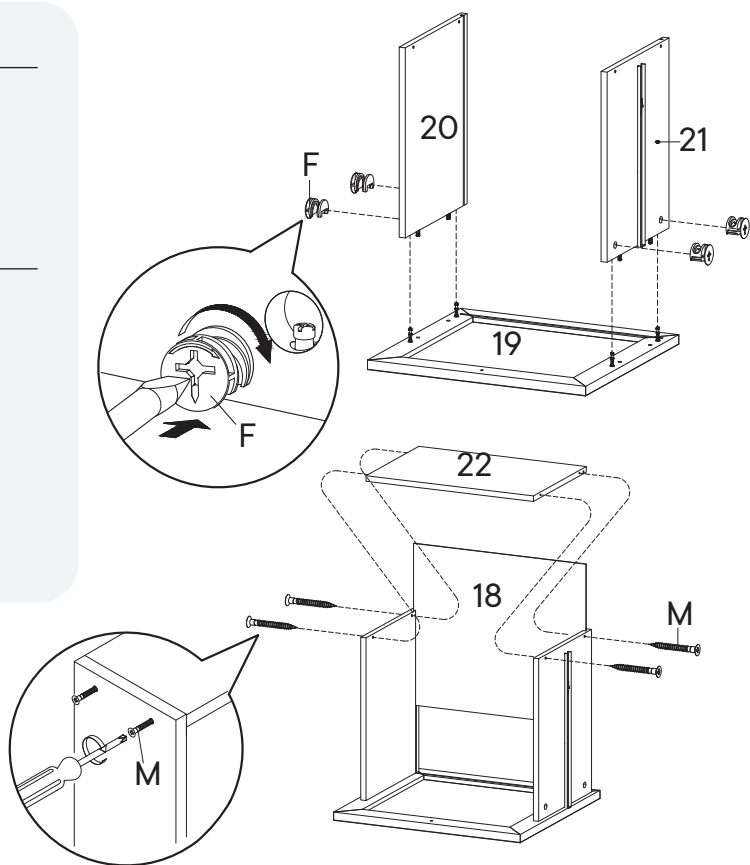
# Step 6

## HARDWARE

- F** Cam Lock Ø12 mm x4
- M** Screw M 8 x 39 mm x4

## COMPONENTS

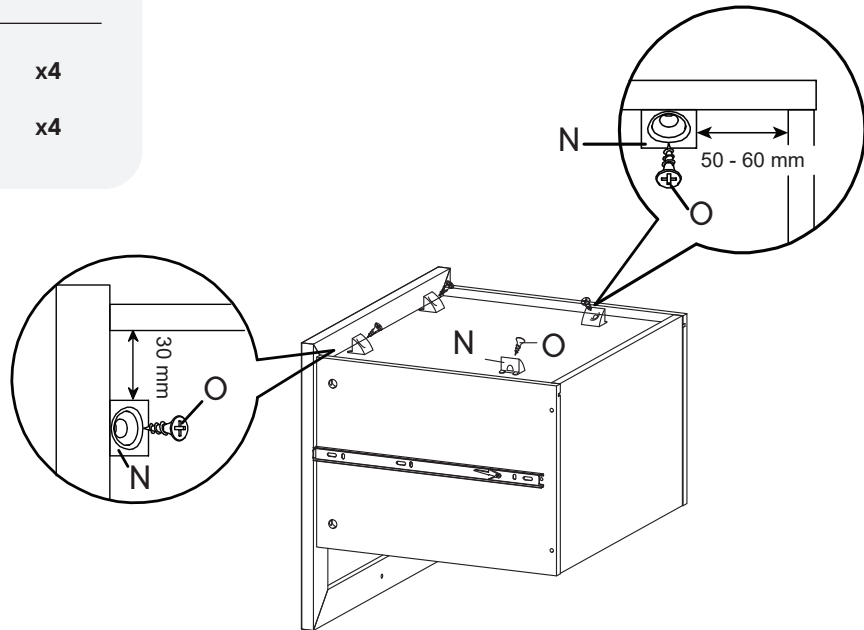
- 18** Bottom Drawer x1
- 19** Front Drawer Big x1
- 20** Side Drawer Left Big x1
- 21** Side Drawer Right Big x1
- 22** Back Drawer Big x1



# Step 7

## HARDWARE

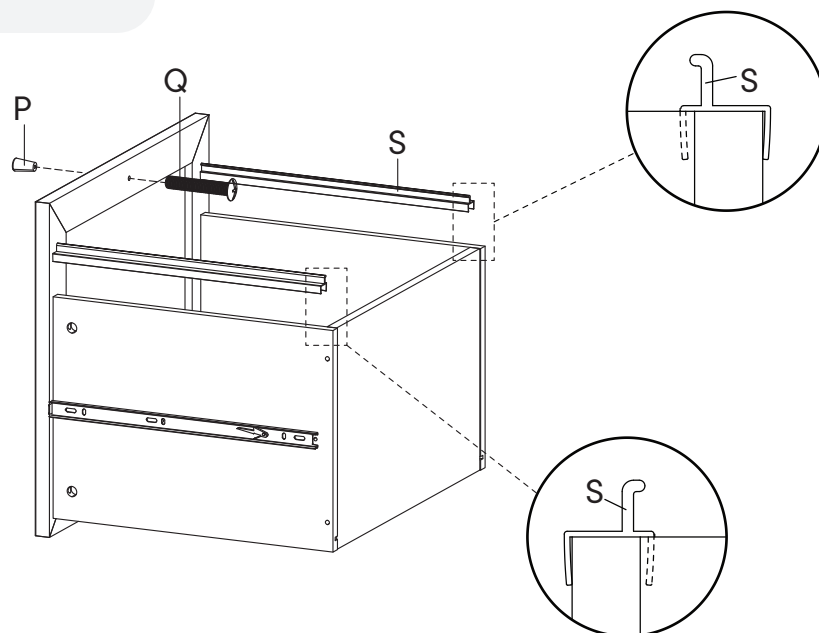
- N** Wedge x4
- O** Screw M 3.5 x 15.5 mm x4



# Step 8

## HARDWARE

- P** Handle x1
- Q** Screw M 4 x 25 mm x1
- S** File Hang Rail x2



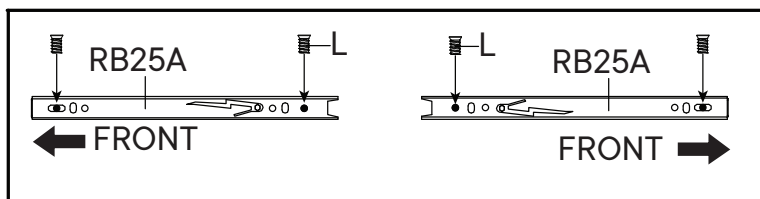
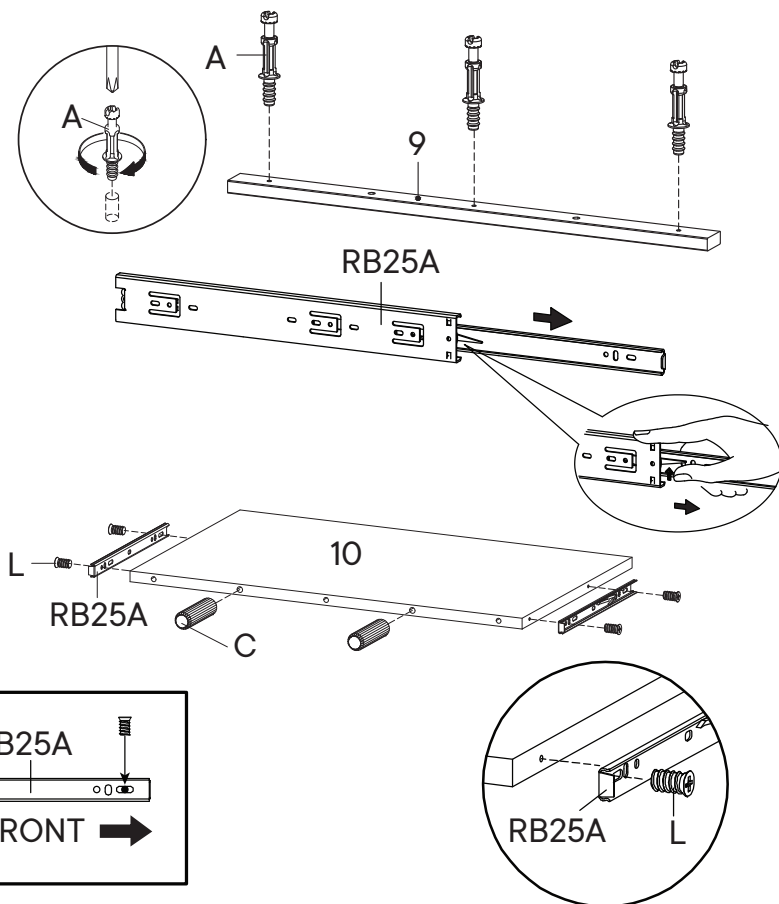
# Step 9

## HARDWARE

- A** Cam Bolt Ø6 x 35 mm x3
- C** Wood Dowel Ø8 x 30 mm x2
- L** Screw M 6 x 10.5 mm x4
- RB25A** Keyboard Drawer Runner x1

## COMPONENTS

- 9** Front Skirt x1
- 10** Keyboard Drawer Base x1



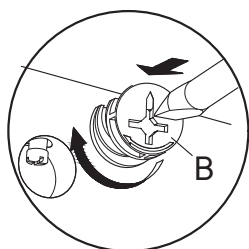
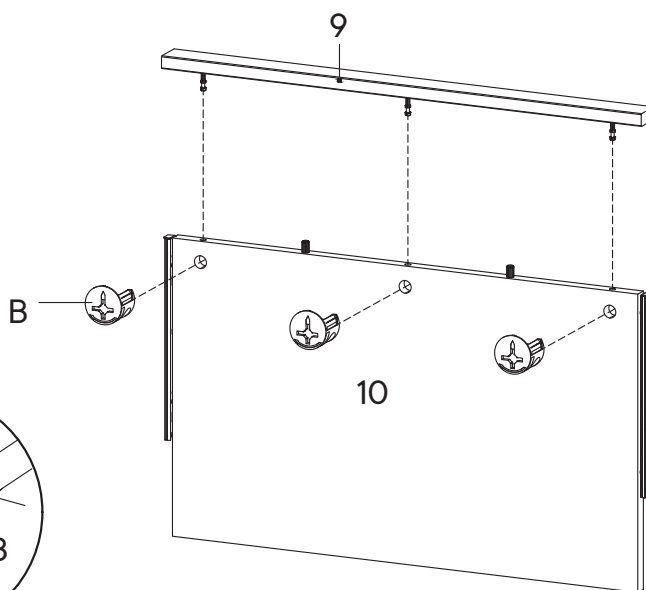
# Step 10

## HARDWARE

- B** Cam Lock Ø15 mm x3

## COMPONENTS

- 9** Front Skirt x1
- 10** Keyboard Drawer Base x1



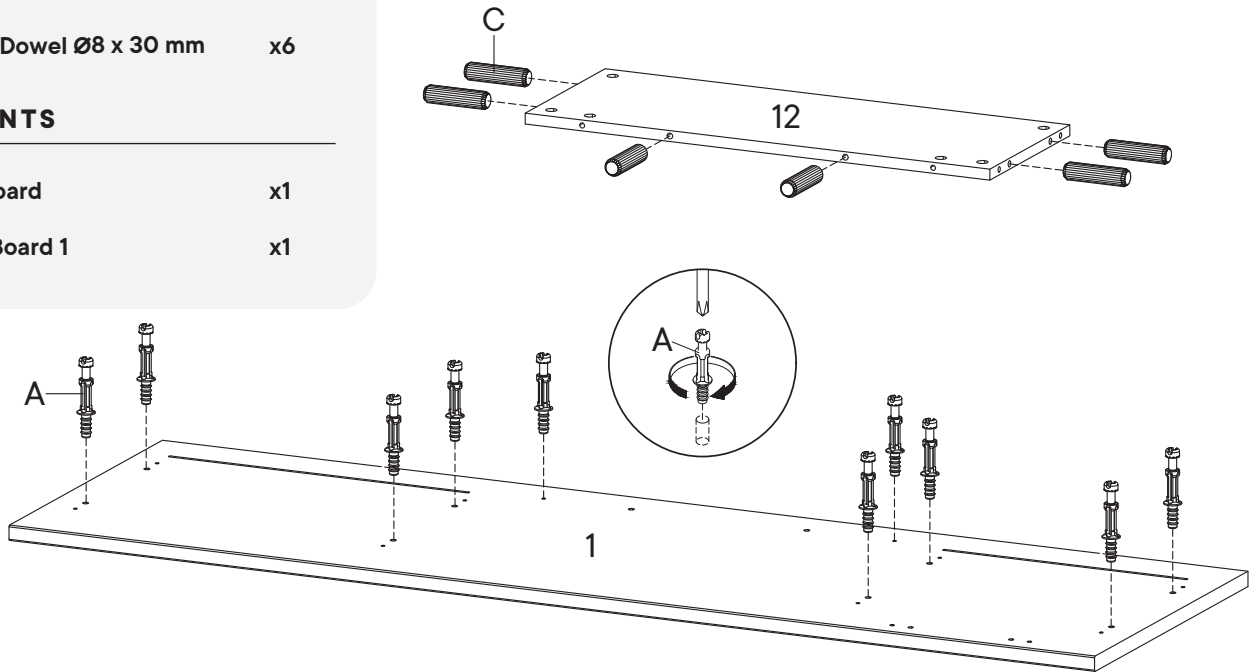
# Step 11

## HARDWARE

- A** Cam Bolt  $\varnothing 6 \times 35$  mm x10
- C** Wood Dowel  $\varnothing 8 \times 30$  mm x6

## COMPONENTS

- 1** Top Board x1
- 12** Back Board 1 x1



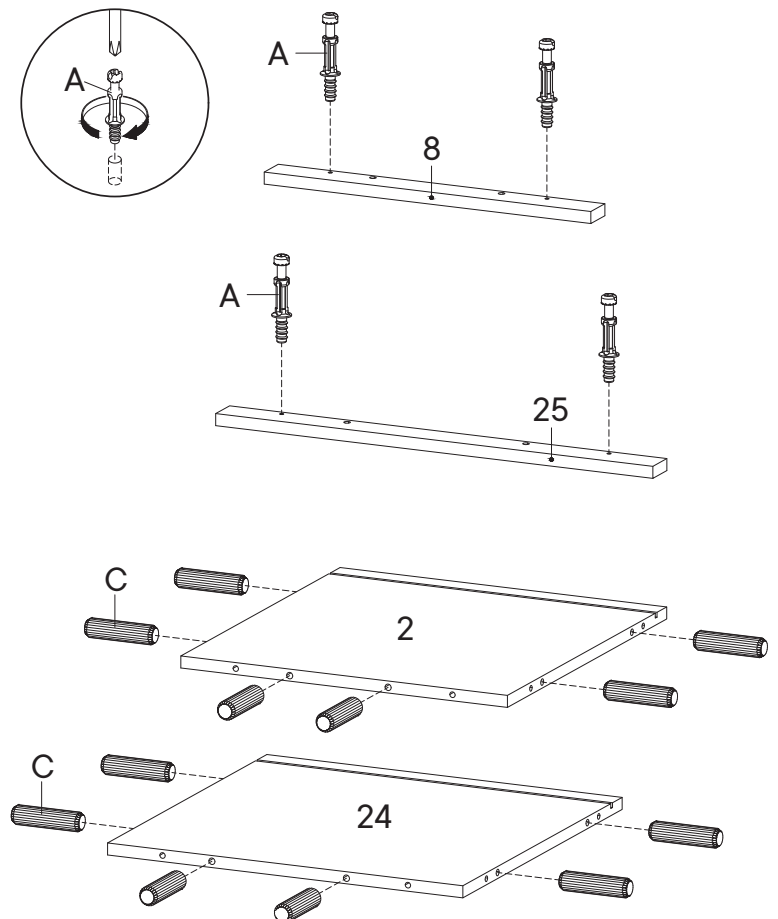
# Step 12

## HARDWARE

- A** Cam Bolt  $\varnothing 6 \times 35$  mm x4
- C** Wood Dowel  $\varnothing 8 \times 30$  mm x12

## COMPONENTS

- 2** Bottom Board 1 x1
- 8** Bottom Skirt 1 x1
- 24** Bottom Board 2 x1
- 25** Front Skirt 2 x1



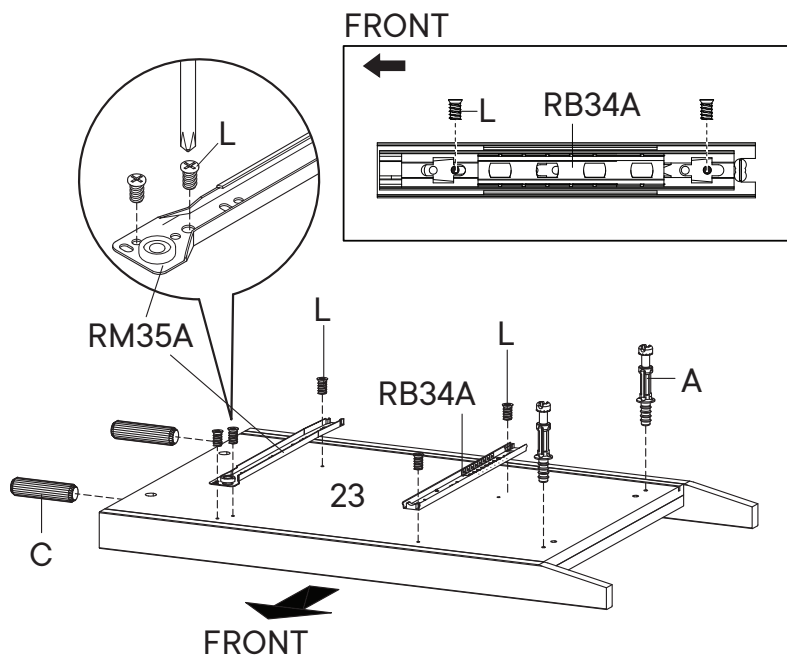
# Step 13

## HARDWARE

- A** Cam Bolt Ø6 x 35 mm x2
- C** Wood Dowel Ø8 x 30 mm x2
- L** Screw M 6 x 10.5 mm x5
- RB34A** Drawer Runner x1
- RM35A** Drawer Runner x1

## COMPONENTS

- 23** Center Board Left x1



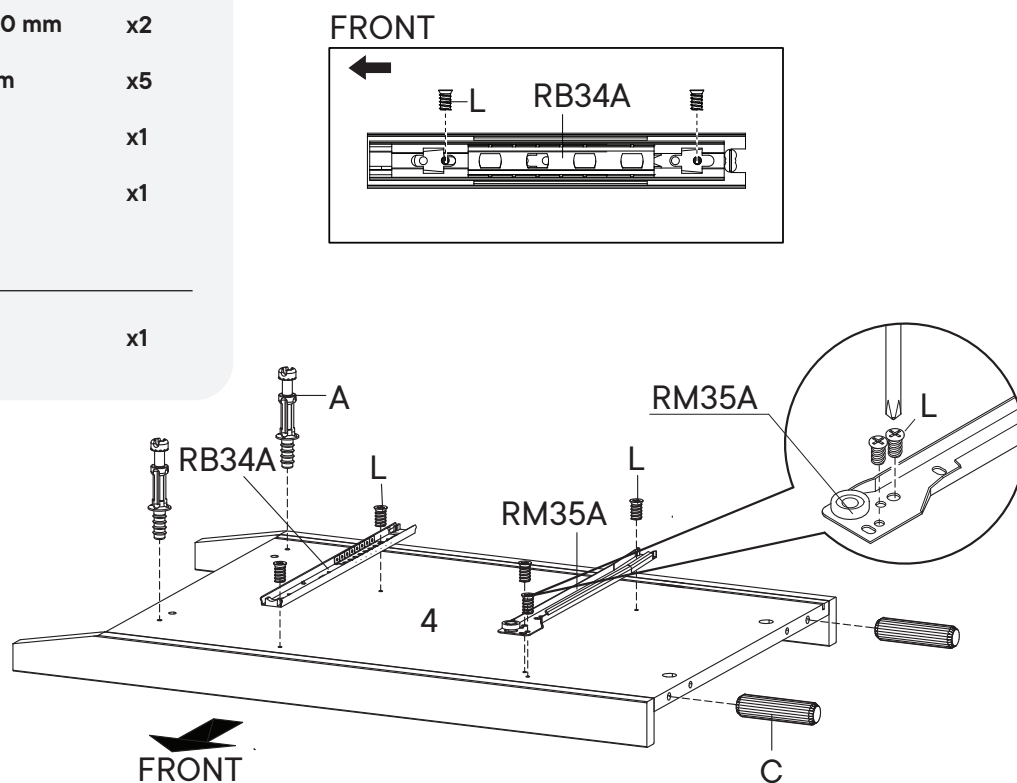
# Step 14

## HARDWARE

- A** Cam Bolt Ø6 x 35 mm x2
- C** Wood Dowel Ø8 x 30 mm x2
- L** Screw M 6 x 10.5 mm x5
- RB34A** Drawer Runner x1
- RM35A** Drawer Runner x1

## COMPONENTS

- 4** Side Board Right x1



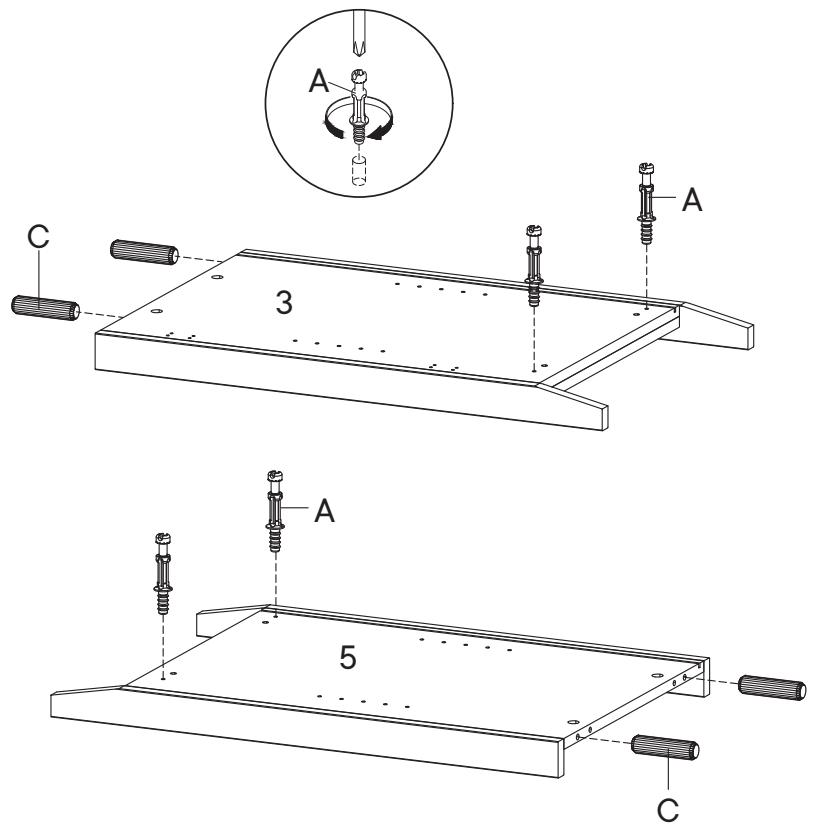
# Step 15

## HARDWARE

- A** Cam Bolt Ø6 x 35 mm x4
- C** Wood Dowel Ø8 x 30 mm x4

## COMPONENTS

- 3** Side Board Left x1
- 5** Center Board Left x1



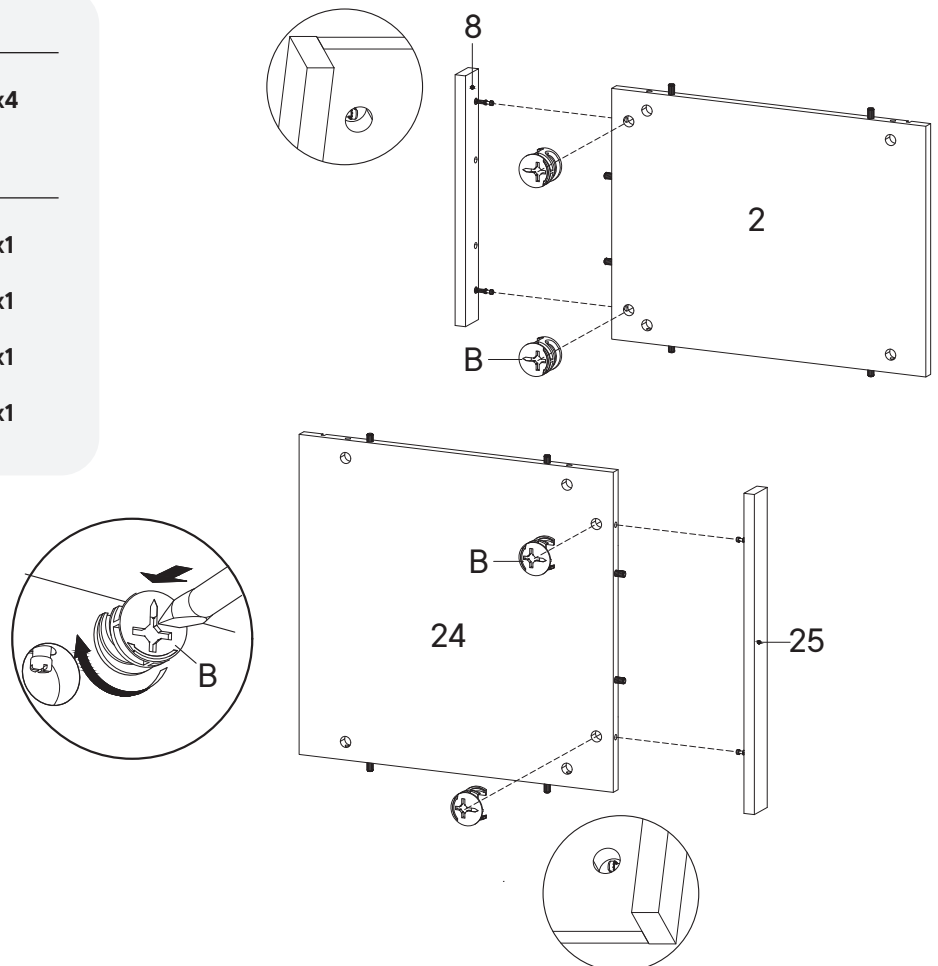
# Step 16

## HARDWARE

- B** Cam Lock Ø15 mm x4

## COMPONENTS

- 2** Bottom Board 1 x1
- 8** Bottom Skirt 1 x1
- 24** Bottom Board 2 x1
- 25** Bottom Skirt 2 x1



# Step 17

## HARDWARE

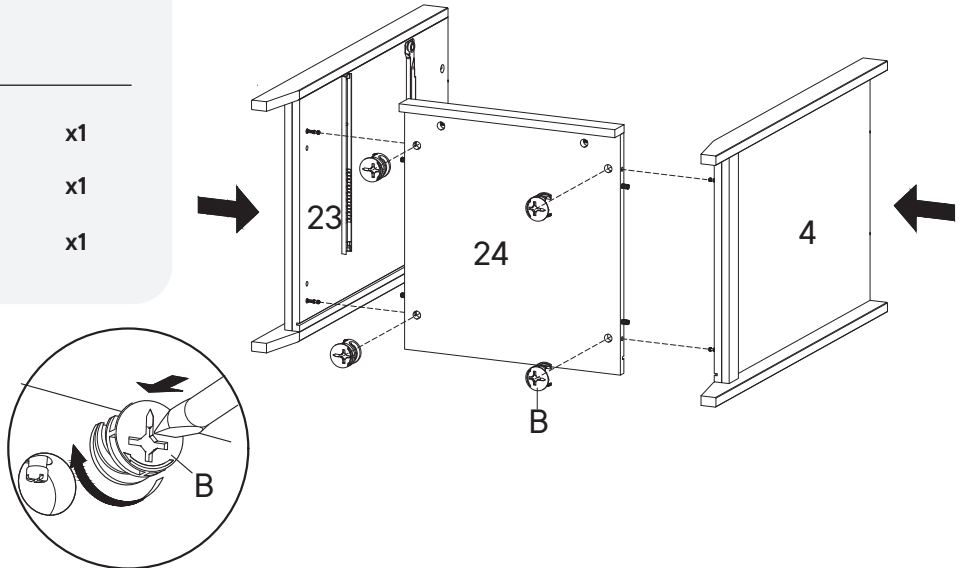
**B** Cam Lock Ø15 mm x4

## COMPONENTS

**4** Side Board Right x1

**23** Center Board Right x1

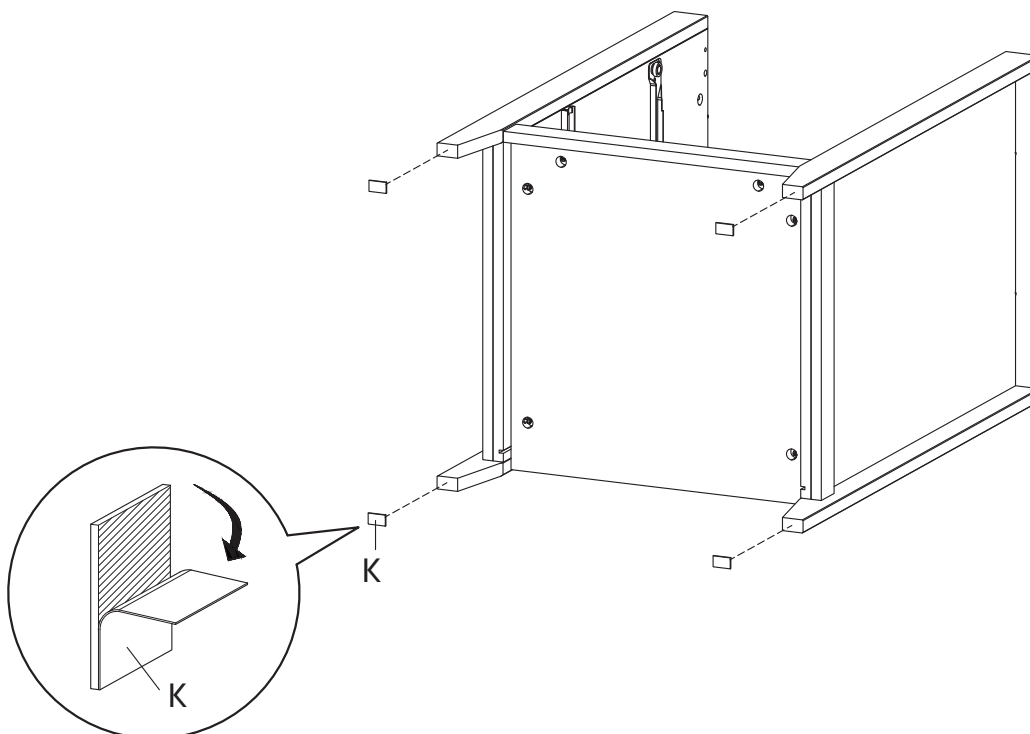
**24** Bottom Board 2 x1



# Step 18

## HARDWARE

**K** Floor Protector x4



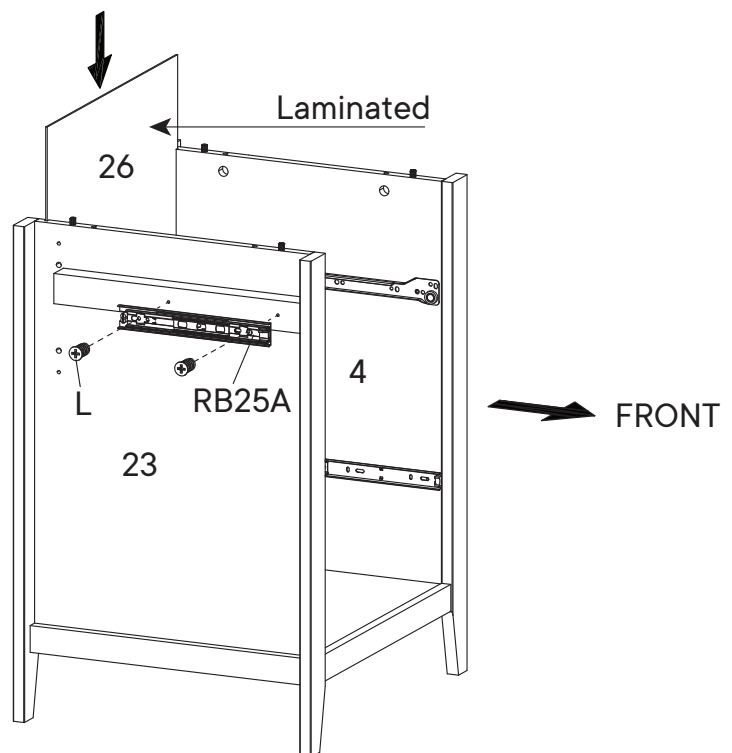
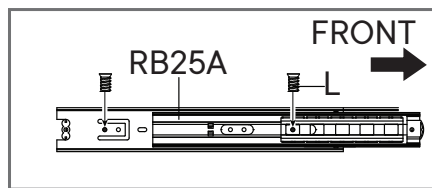
## Step 19

### HARDWARE

- L** Screw M 6 x 10.5 mm x2
- RB25A** Keyboard Drawer Runner x1

### COMPONENTS

- 26** Back Board 3 x1



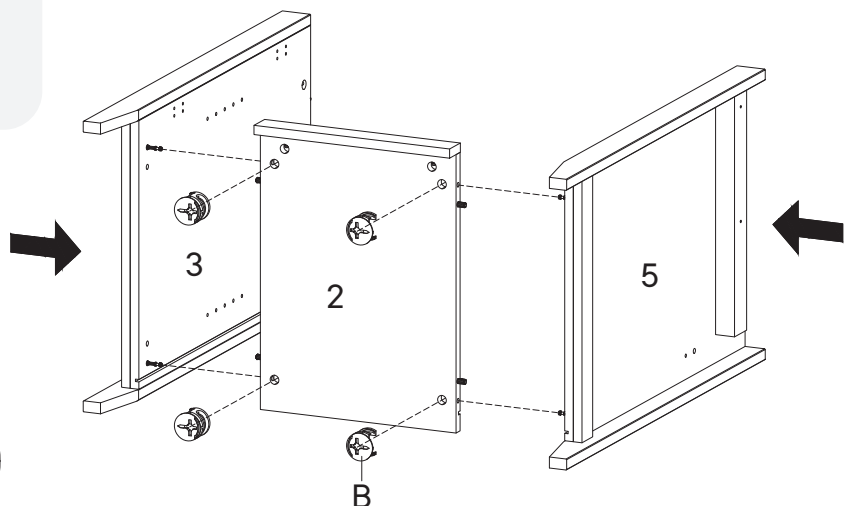
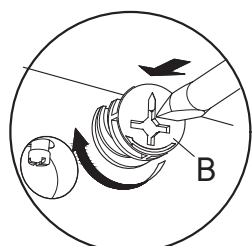
## Step 20

### HARDWARE

- B** Cam Lock Ø15 mm x4

### COMPONENTS

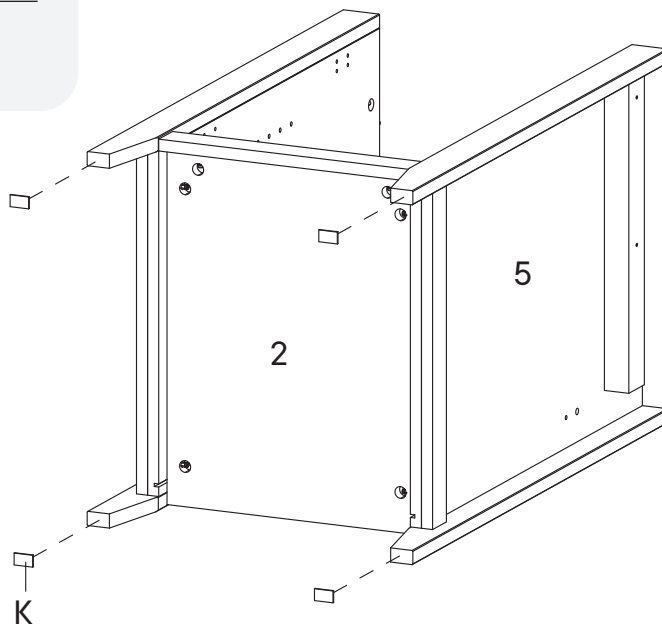
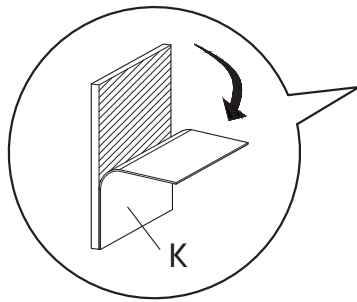
- 2** Bottom Board 1 x1
- 3** Side Board Left x1
- 5** Center Board Left x1



# Step 21

## HARDWARE

- K** Floor Protector x4



# Step 22

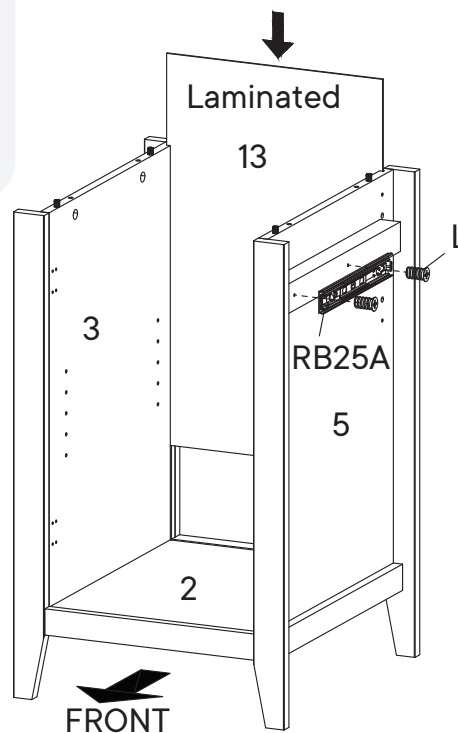
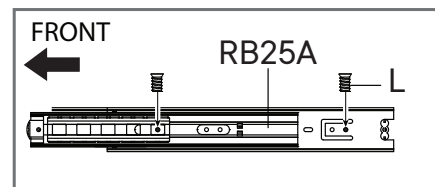
## HARDWARE

- L** Screw M 6 x 10.5 mm x2

- RB25A** Keyboard Drawer Runner x1

## COMPONENTS

- 13** Back Board 2 x1



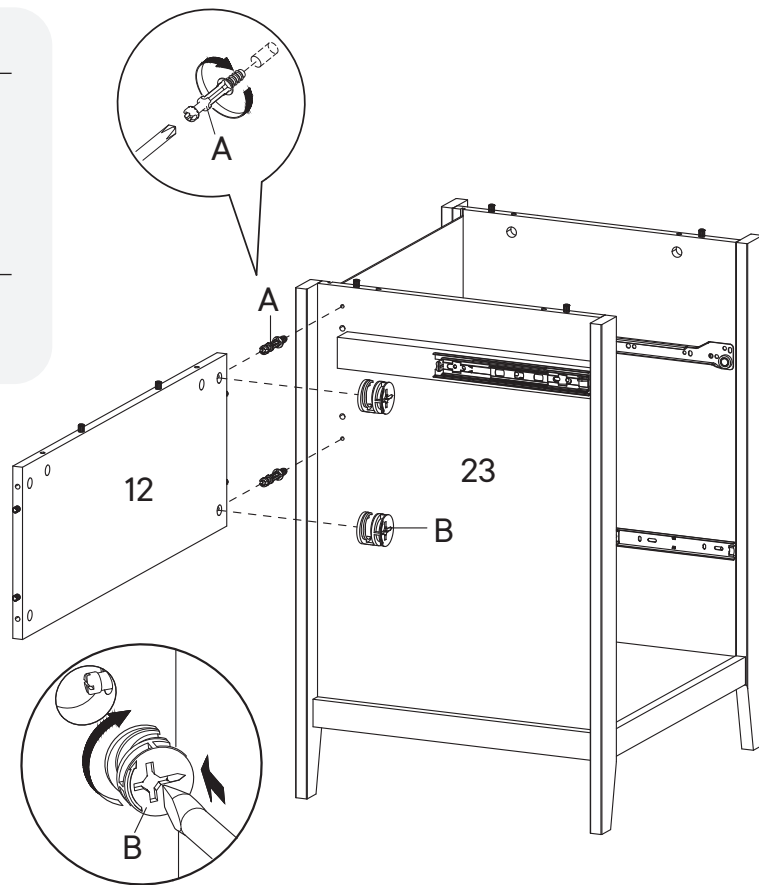
## Step 23

### HARDWARE

- A** Cam Bolt  $\varnothing 6 \times 35$  mm      x2
- B** Cam Lock  $\varnothing 15$  mm      x2

### COMPONENTS

- 12** Back Board 1      x1



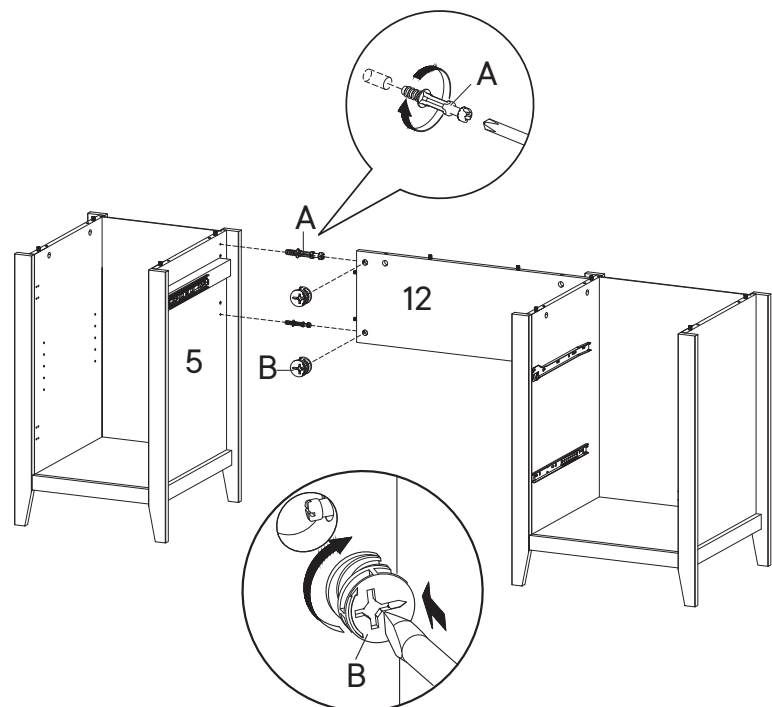
## Step 24

### HARDWARE

- A** Cam Bolt  $\varnothing 6 \times 35$  mm      x2
- B** Cam Lock  $\varnothing 15$  mm      x2

### COMPONENTS

- 12** Back Board 1      x1



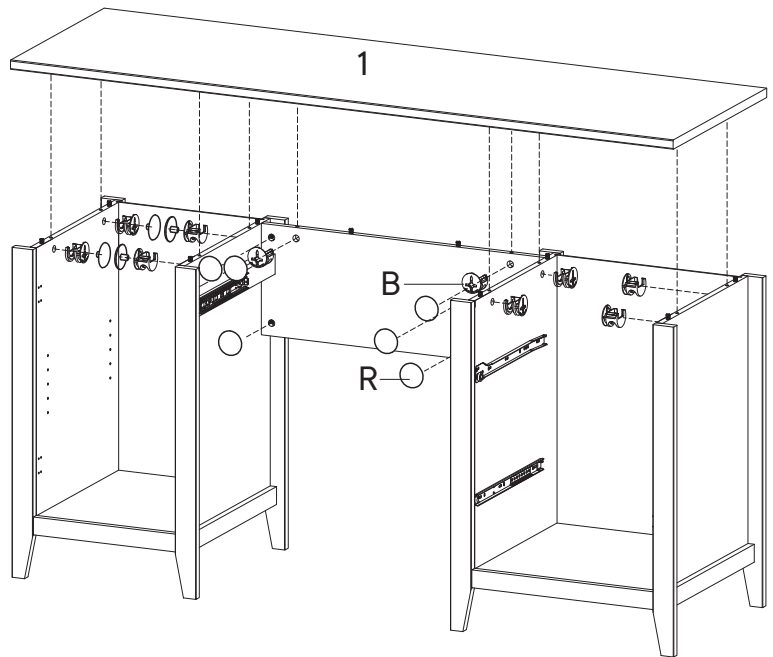
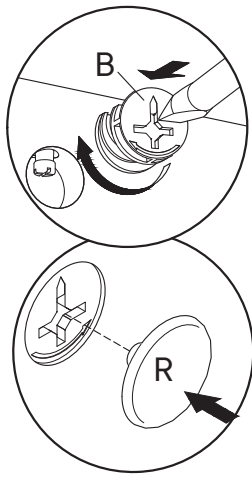
# Step 25

## HARDWARE

- B** Cam Lock Ø15 mm x10
- R** Screw Cap Ø15 mm x10

## COMPONENTS

- 1** Top Board x1



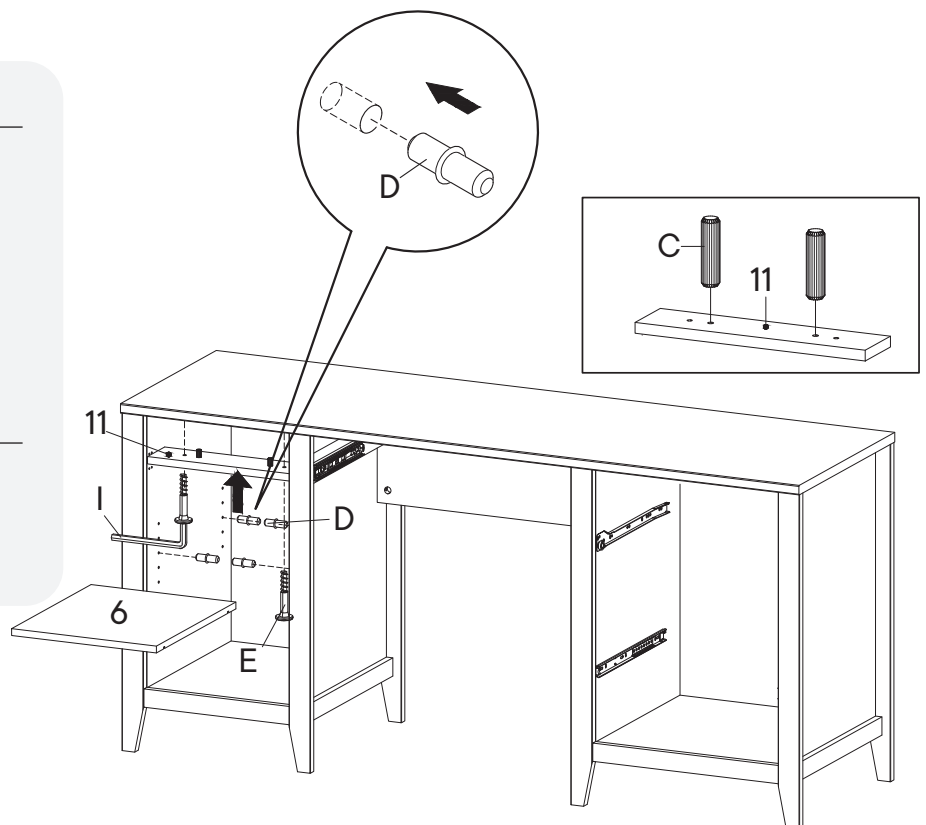
# Step 26

## HARDWARE

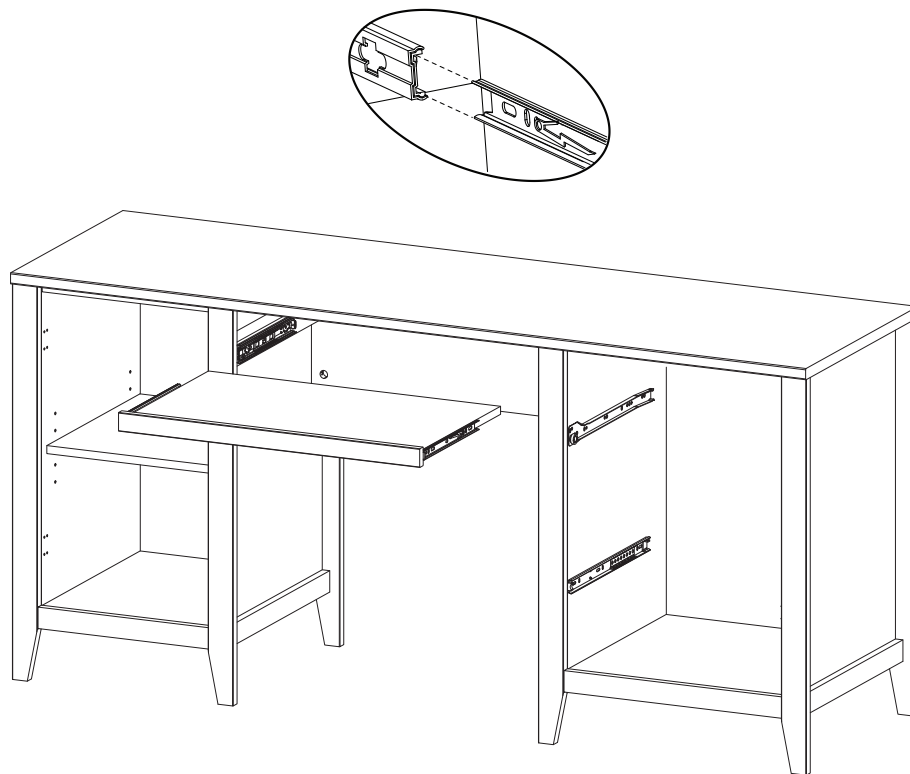
- C** Wood Dowel Ø8 x 30 mm x2
- D** Shelf Pin x4
- E** Screw M 6.4 x 35 mm x2
- I** Allen Key x1

## COMPONENTS

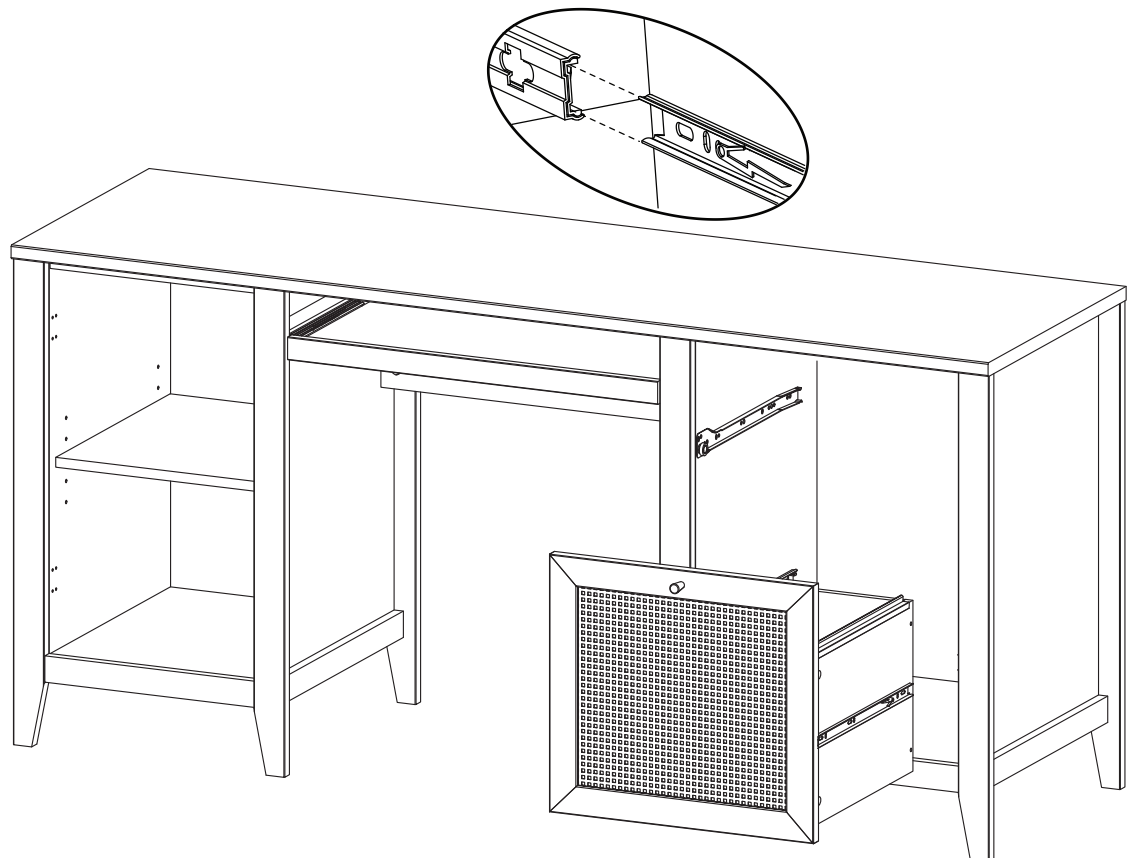
- 6** Adjustable Shelf x1
- 11** Support Board x1



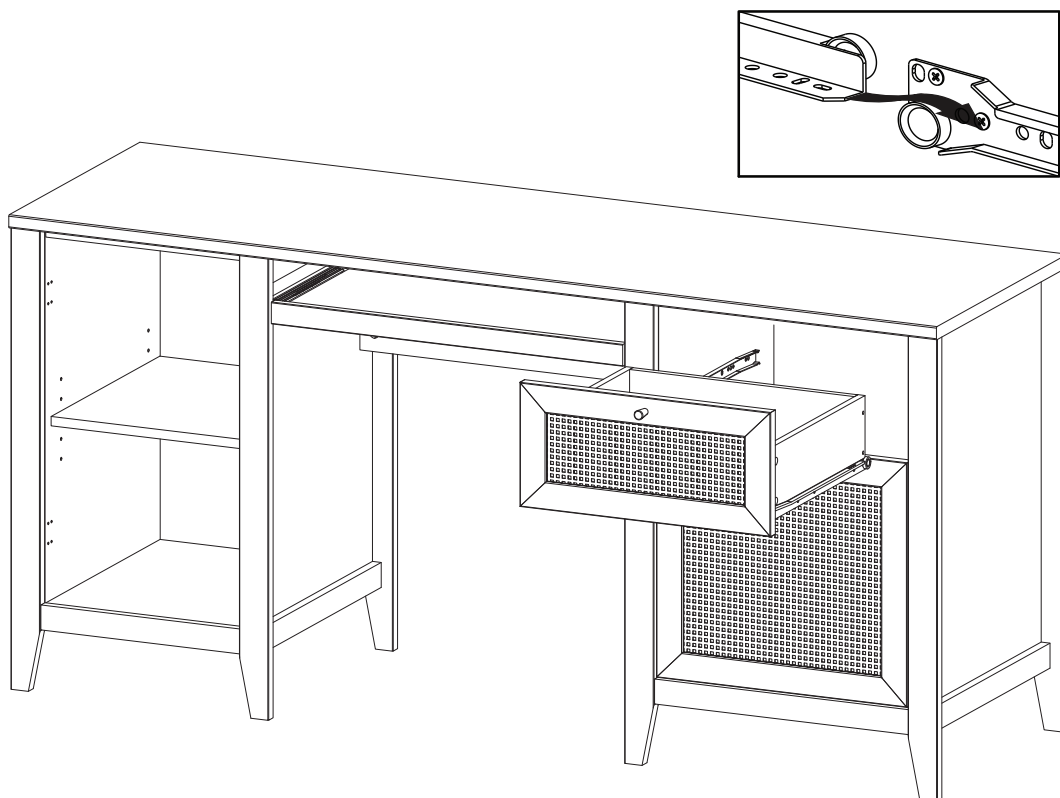
# Step 27



# Step 28



# Step 29



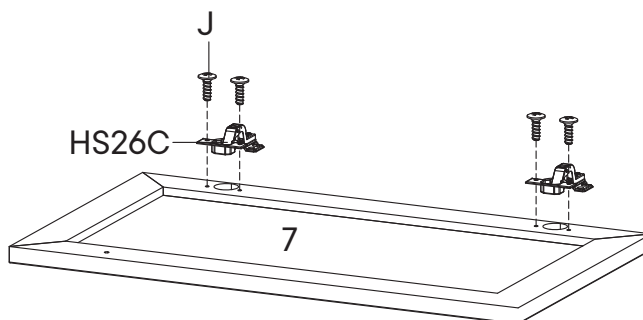
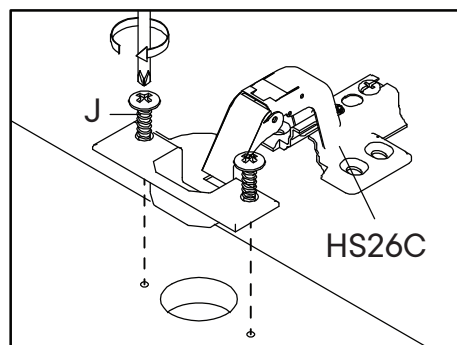
# Step 30

## HARDWARE

- J** Screw M 4.5 x 12.5 mm x4
- HS26C** Hinge x2

## COMPONENTS

- 7** Frame Door x1



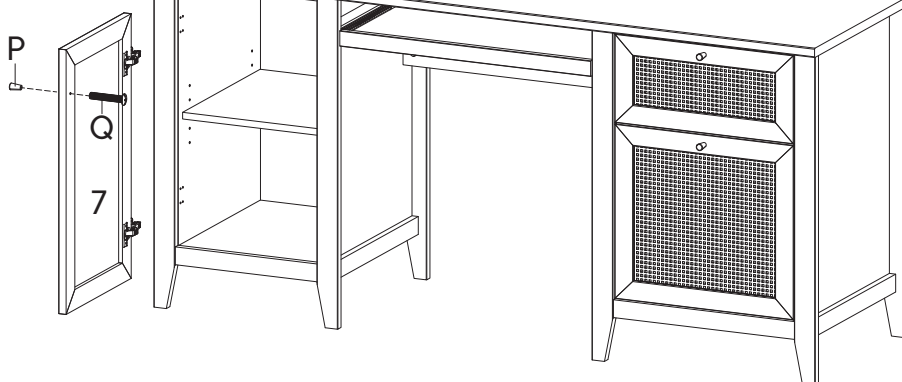
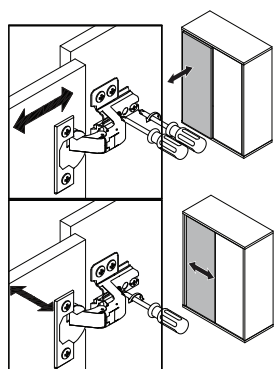
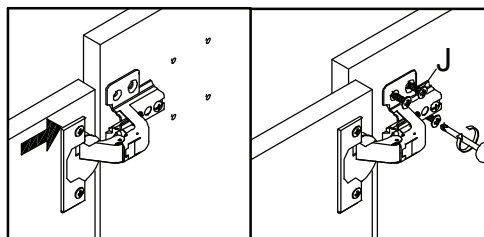
# Step 31

## HARDWARE

- J** Screw M 4.5 x 12.5 mm      x8
- P** Handle                              x1
- Q** Screw M 4 x 25 mm            x1

## COMPONENTS

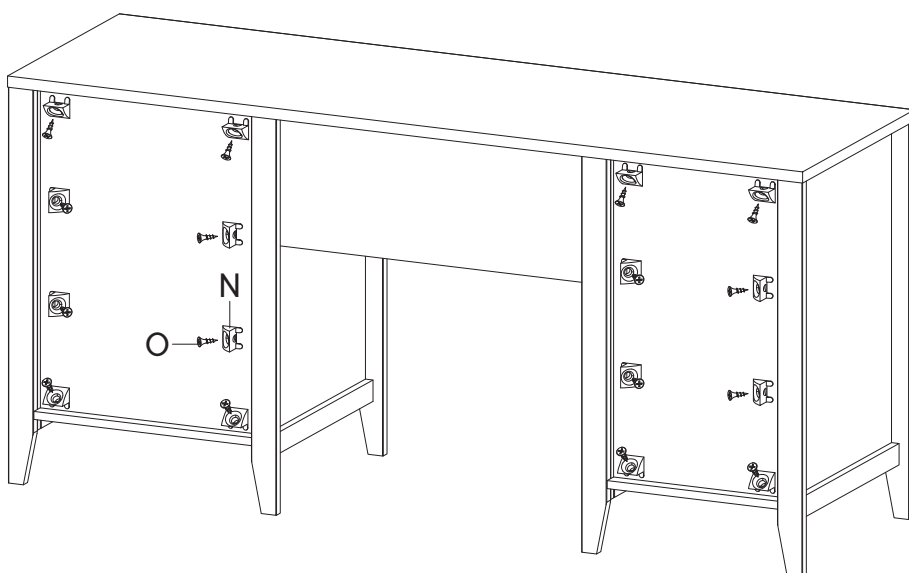
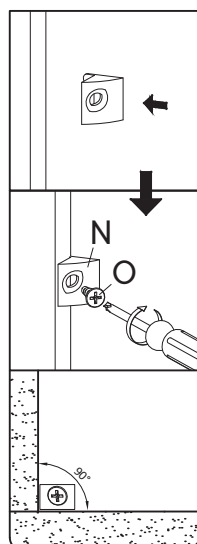
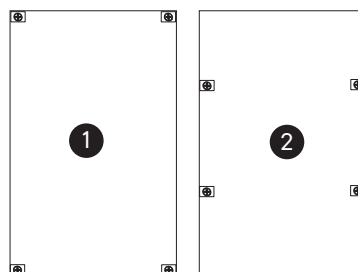
- 7** Frame Door                        x1



# Step 32

## HARDWARE

- N** Wedge                                x16
- O** Screw M 3.5 x 15.5 mm        x16



# Great job!

Desk assembly is complete.

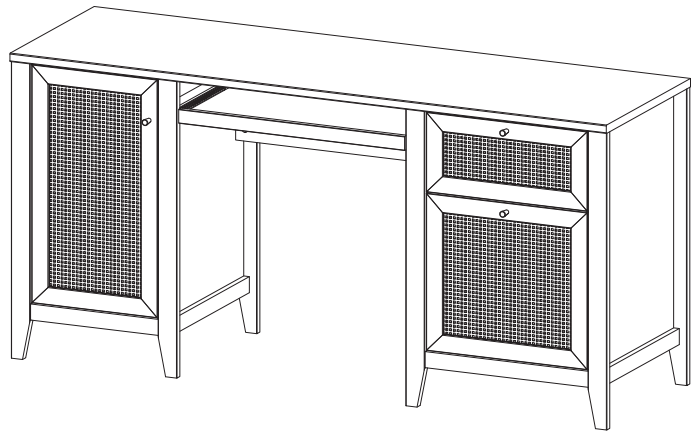
## ♥ CARING FOR YOUR ITEM

Indoor use only.

Not contract grade.

Clean using a non-abrasive cloth and a mild cleaner.

Never use harsh chemicals, as they could damage the finish or integrity of the item.



CONNECT WITH US!   

Tag us @modway\_furniture and #modway for a chance to be featured.