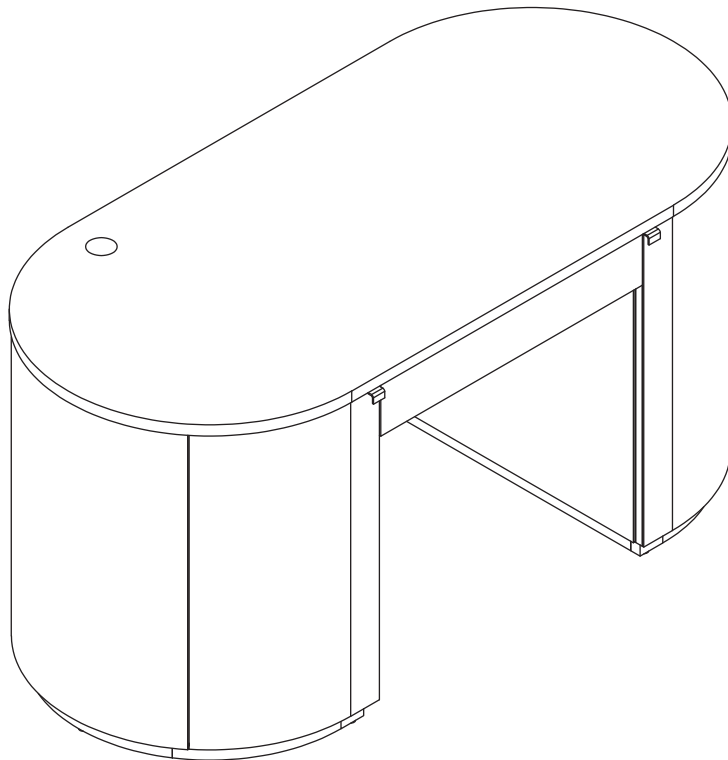




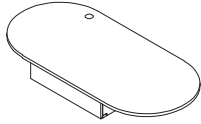
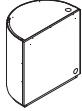
MARLOW EXECUTIVE DESK

MARLOW




ASSEMBLY INSTRUCTIONS



PARTS LIST

LABEL	PICTURE	DESCRIPTION	Q'TY
A		TOP	1
B		LEGS	2

HARDWARE

LABEL	PICTURE	DESCRIPTION	Q'TY
C		BOLT M6x30	8
D		WASHER M6	8
E		ALLENKEY	1

BEFORE BEGINNING ASSEMBLY



Read instructions cover to cover



Have two adults on hand for assembly



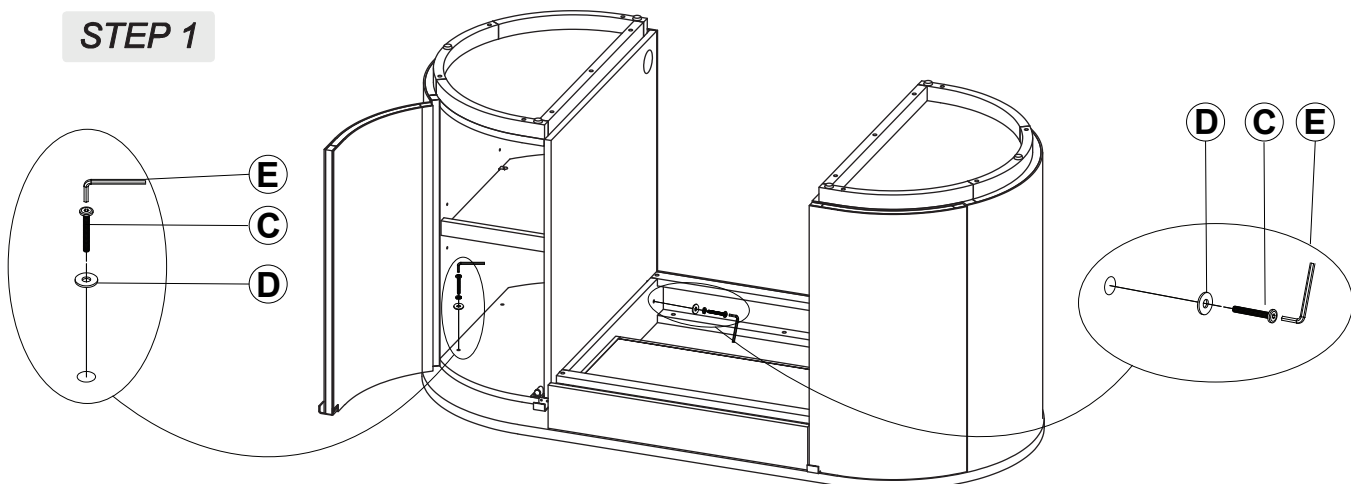
Do NOT assemble on flooring or carpet. Assemble on a clean non-marring surface (ex: Packing foan)



Save all packaging until assembly is completed

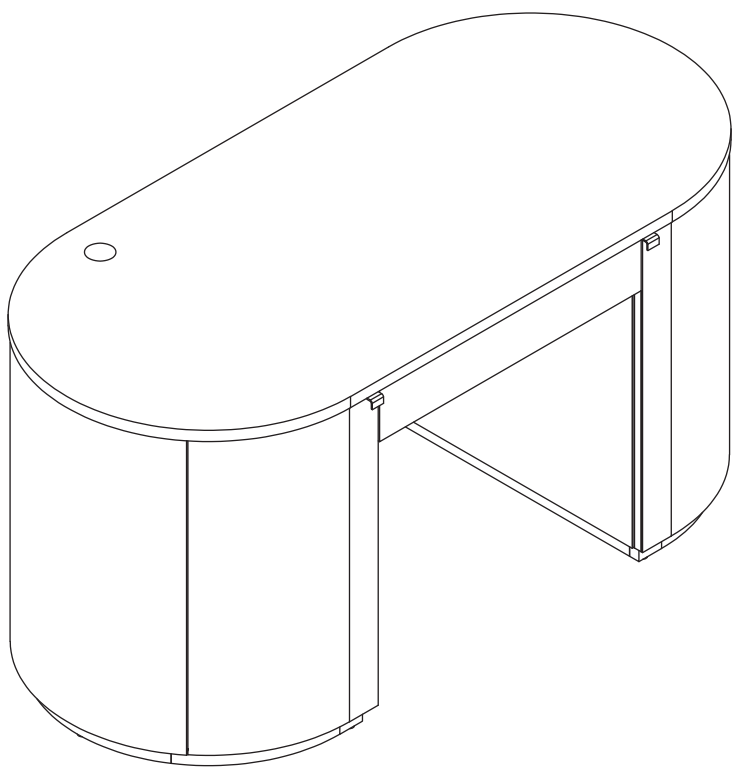
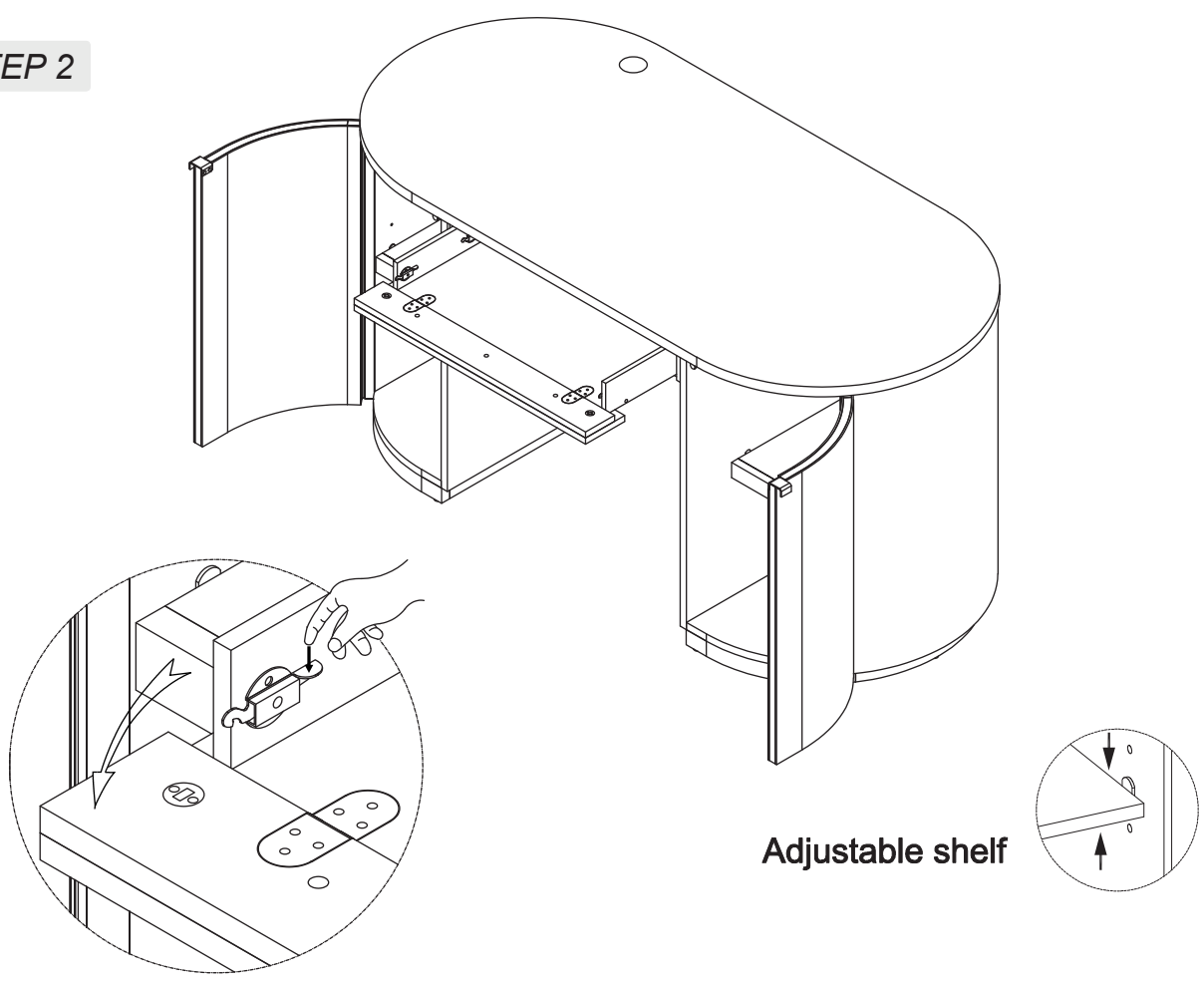
ASSEMBLY STEPS

STEP 1



Position the product with care and secure the legs as shown.

STEP 2



FINISH

CARE & MAINTENANCE



Do not put hot items directly on furniture surface.



Do not clean furniture with harsh cleansers or polish



Dust and wipe up spills using a clean, non-colored, lint-free cloth.



Stains may be removed with a mild soap solution and a damp cloth.



Do not place furniture under direct sunlight.



Do not place furniture near heating or cooling vents.



Do not write on furniture without a padded barrier to protect the surface.



Do not place furniture outside, for indoor use only.